



Atkinson Centre for
Society and Child Development



Human Development Barriers
to Post-Secondary Education



-
-
-

Biodevelopmental Processes



-
-
-
-
-
-
-
-

-
-
-

Atkinson Centre for Society and Child Development

In all societies, there is a significant association between social and economic status (SES) and developmental health, but societies with sharper differences across this SES gradient have poorer health outcomes overall compared with societies with flatter gradients.

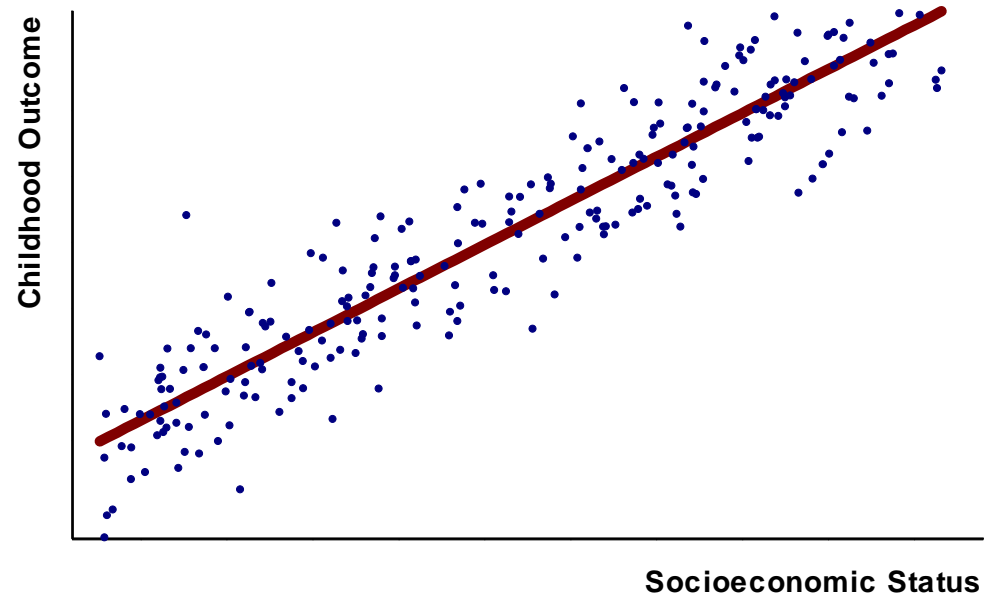


Figure 1. A Socioeconomic Gradient

-
-
-

Atkinson Centre for Society and Child Development

Societies with sharper social status differences have generally lower developmental health.

-
-
-

Atkinson Centre for Society and Child Development

At least three policy implications:

- 1. Income/wealth disparities**
- 2. Distribution of developmental opportunities and programs**
- 3. Social capital.**

-
-
-

Atkinson Centre for Society and Child Development

- PSE participation requires a number of favourable outcomes of developmental health, each likely subject to gradient effects.
- These outcomes can be thought of as “key competencies” as in current OECD program.
- Include traditionally assessed cognitive tools, socioemotional aspects, and the “self” system

-
-
-

Atkinson Centre for Society and Child Development

- Evidence suggests that barriers on all these fronts may begin to emerge early, even before the onset of schooling.
- Patterns of inter-individual differences are hard to change, either early or late in schooling.
- Parental support/encouragement is a key but not the only factor; students' future perceptions also implicated; more research on mechanisms needed.
- Cost/risk factors interact with these through a population "calculus": loss of students "on the bubble" is increased.

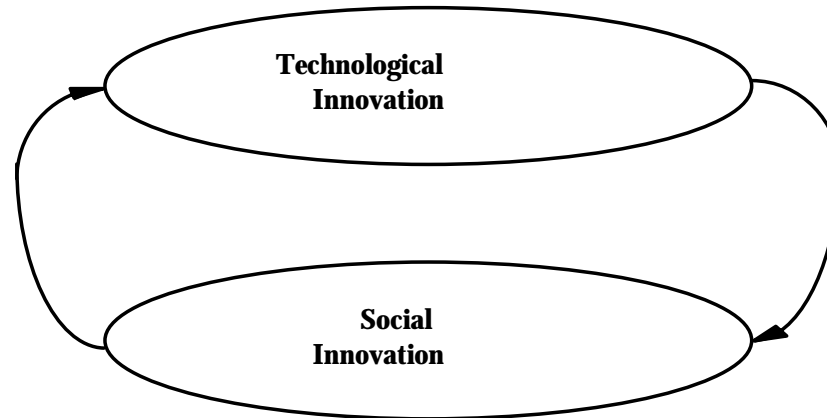
-
-
-

Atkinson Centre for Society and Child Development

- Recent work in economics points to the strong likelihood that the growth economies of the 21st Century will be the knowledge economies, in which innovation is the key ingredient.
- Innovation is fundamentally a human resource, strongly influenced by both human and social capital.

•
•
•

Atkinson Centre for Society and Child Development The Innovation Dynamic



- 1. Precision Stone Tools**
Intergroup Learning
- 2. Agricultural Resource**
Urban Congregation
- 3. Industrial Manufacture**
Taylorism / Urban Linkages /
Market Mechanisms

